

NextPDF Professional

User Guide

Version 3

Well Develop International Limited

Last Modification Date : Feb. 22, 2008

Introduction

NextPDF Professional enables you to easily integrate "PDF Output" function to any of your Windows application. It is easy to use. No matter your application is Word, Powerpoint, Excel, Photoshop, AutoCAD or Visio¹, you can always convert your document output to PDF by using NextPDF's "Print to PDF". NextPDF Professional :

- Supports different output resolutions: screen, printer, e-Book, prepress and is tailor-made for professional users.
- Supports different paper sizes ranging from "Letter", "A5", "A4" and up to A0.
- Provides options to encrypt your PDF output with password to restrict readers to view and/or to print your files.
- Provides options to add watermarking, such as "Confidential", "Sample", "Draft" to your PDF output.
- Supports English, Chinese Traditional, Chinese Simplified
- Support different PDF format (PDF 1.3 format, PDF 1.4 format, PDF 1.5 format).
- Support options to add background image.
- Support user defined document properties, such as Keywords to facilitate document searching.

Installation – CD ROM Version

Simply place your “NextPDF Professional Edition” CD in your CD-ROM drive. The autorun program should start automatically. If not, click the “My Computer” icon and then click the icon representing your CD-ROM drive to open it. Locate the autorun program in the CD-ROM folder and double click on it to start the program.

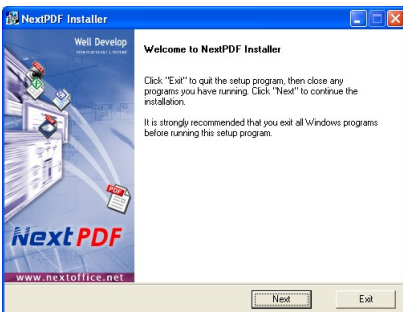


Fig. 1

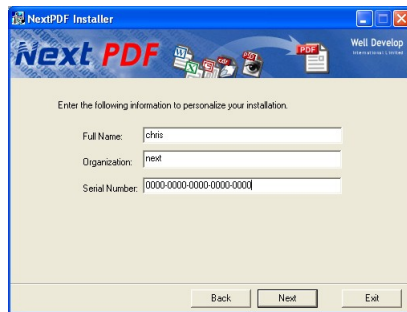


Fig. 2

1. The “Installation” screen (Fig. 1) appears, press <Next> to continue.
2. In the “Personalize Detail” screen (Fig. 2), enter your name, company and Support Serial Number. Your Support Serial Number is printed at the last page of this booklet.
3. The installer will check if any old version of NextPDF (OEM Edition) or NextOfficePDF exists in your system. If found, you will be prompted (Fig. 3) to remove the old version before installing the “NextPDF” Professional Edition. After the old version is removed, the installer will prompt you to reboot your PC.

1. Microsoft, Windows, Word, Excel, PowerPoint, Visio are trade marks / registered trade marks of Microsoft. Photoshop, PDF are trade marks / registered trademarks of Adobe.

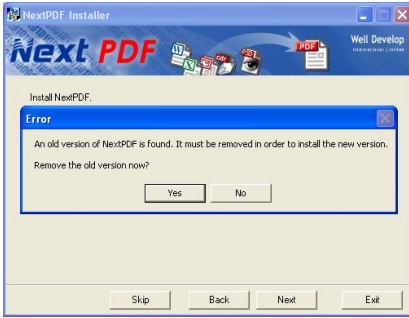


Fig. 3



Fig. 4

4. If no old version is found, the installer will proceed to install NextPDF Professional Edition (Fig. 4). Just follow the instruction to complete the installation. When you are prompted to “Add Port” to your PC (Fig. 5), simply select <OK> to continue.

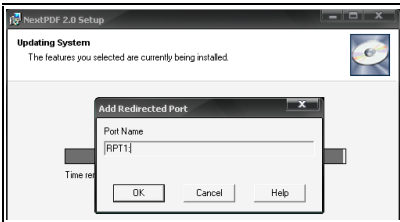


Fig. 5

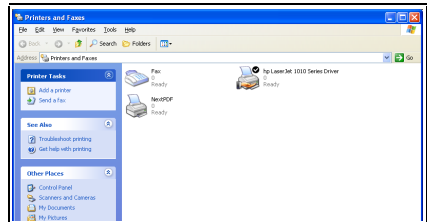


Fig. 6

5. Upon completion, you should be able to find a “NextPDF” printer under your “Printers and Faxes” program group. (Fig. 6)

Installation – ESD Version

After you have downloaded your Electronic Software Distribution (ESD) version, simply double click on the "NextPDF-1.x.x" executable file to kick off the installation. You will be prompted to select the installation language. (Fig. 7) to kick start the Installation Wizard (Fig. 8).



Fig. 7



Fig. 8

The ESD version does not require you to enter any personalized information or serial number. By default, it will be running as evaluation version. The evaluation version will expire after 30 days trial period. PDF output generated by the evaluation version will be the "Evaluation" wording stamped on every page of the PDF output document.

Un-installation

1. In menu "Start" → "Settings" → "Control Panel", select "Add/Remove Applications" option. (Fig. 10)

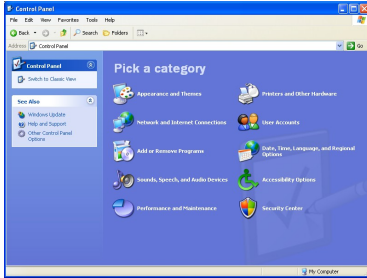


Fig. 10

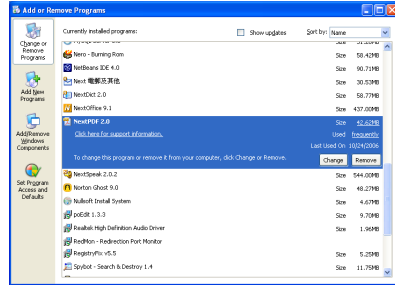


Fig. 11

2. In the "Add/Remove Application" screen (Fig. 11), select "NextPDF" and press <Remove> to confirm.
3. Removing NextPDF will keep your PDF document files untouched.

Convert Evaluation Version to Production Version

You will need a valid registration Serial Number to convert your NextPDF Professional evaluation version to production version. If you already have a valid registration Serial Number on hand, you can perform the activation by selecting menu "Start" -> "All Programs" -> "NextPDF 3.0 Professional" -> "Register" to bring up the Registration program (Fig. 9), enter your detail and press <OK> to confirm. If you do not have a valid registration Serial Number and would like to purchase one from our website, you can press <Buy Now> button and you will be redirected to our on-line store where you can purchase the NextPDF ESD version.

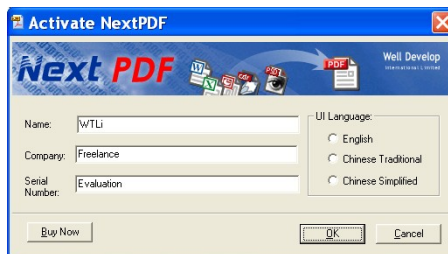


Fig. 9

Toggling User Interface Language

The "Register" program (Fig. 9) also serves the purpose to allow you to switch User Interface language among English, Chinese Traditional and Chinese Simplified.

“Print-To-PDF” function

NextPDF “Print-To-PDF” function enables any application, such as Word, Powerpoint, Excel, Visio, Photoshop with print capability to generate output in PDF format. To create PDF output from your application, simple:

1. Open your desired document and select the “Print” function from your application (Fig. 12)

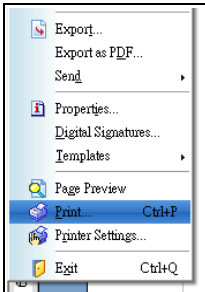


Fig. 12

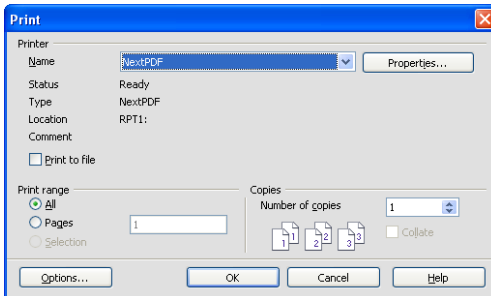


Fig. 13

2. In the pop-up “print” dialog, select “NextPDF” as the target printer. (Fig. 13)
3. Similar to printing to other physical printers, you can specify the pages to be converted to PDF or select “All” to convert the whole document.
4. Finally select “OK” to confirm.

Then, your document output will be buffered as Postscript commands, a NextPDF dialog (Fig. 14) will pop-up to allow you to further specify your PDF output options, such as :

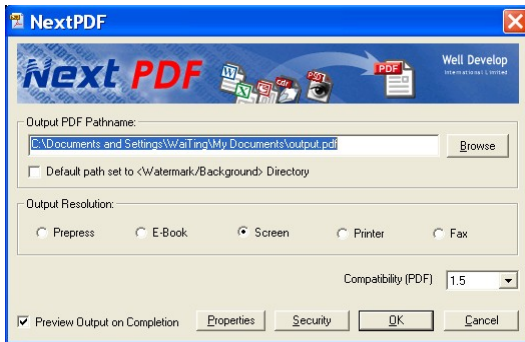


Fig. 14

Browse

Press the <Browse> button to select the pathname for your output PDF. If you pick an existing file, that file will be overwritten.

Output Resolution

Specify which platform the output PDF is targeting for. For example, if the PDF output is to be used for prepress, images in the PDF will be converted to PDF with higher resolution. The trade-off is the output file will occupy more space. If your PDF output is only targeting for laser printing or screen preview, select “Printer” or “Screen”.

Paper size

Starting from NextPDF version 3.0.4, paper size setting for your PDF document is done via the standard printer dialog. There are two different settings for paper size:

1. The default paper size setting

To setup the default paper size setting, go to control panel, open "Printers and Faxes" category and highlight "NextPDF", right click and select "Printing Preferences ..." menu. In the pop-up dialog, select "Paper/Quality" tab and then press the "Advanced" button. Under "Paper/Output" selection, select your desired default paper size in the "Paper Size" list box and press <OK> to confirm your settings. Default setting is "A4".

2. Paper size setting of the current print job

You can override your default paper size setting for each print job. In the "Print" selection dialog, select "NextPDF" and then click the "Properties" button to bring up the printer setting dialog, select "Paper/Quality" tab and then press the "Advanced" button. Under "Paper/Output" selection, select your desired default paper size in the "Paper Size" list box and press <OK> to confirm your settings.

If you specify a paper size smaller than your document, the output will be clipped. If you specify a paper size larger than your document, white space will be added.

Auto-preview

Specify whether you would like to automatically preview your PDF output using Adobe Reader. Note: you must have Adobe Reader installed in your system in order to have this option to be effective.

Default path set to <Watermark/Background> Directory

Check "Default path set to <Watermark/Background> Directory" checkbox to set the default output path to the folder "gs8.56\bin" under NextPDF installation directory. This is where the "watermarking and background templates" are stored.

Compatibility

Specify PDF format compatibility options. Available options are: PDF 1.3, PDF 1.4 and PDF 1.5.

Security Options

Press the <Security> button to specify more security options. Note: this security option is only available in NextPDF Professional Edition. This security option is not available in NextPDF OEM Edition

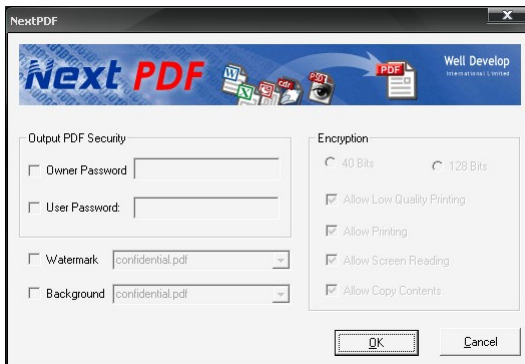


Fig. 15

In the “Security” option dialog (Fig. 15), you can specify the following:

Owner Password

The password that is required to change security settings in Adobe Acrobat. If the reader of the document knows this password he can change any security settings, including all passwords.

User Password

The password that is required to read the document. User password does not give the reader the ability to change any security setting.

Allow printing

If not selected, readers will not be able to print the document in optimal quality. If “Allow low-quality printing” is not selected, readers will not be able to print the document at all.

Allow copy to clipboard

If this checkbox is not ticked, readers will not be able to copy document content by copying text or graphics to the clipboard and then pasting the content into another application. If you allow copying to clipboard you also automatically enable the “Allow screen readers” options and other accessibility tools can access to the content of your document.

Allow screen readers

If this checkbox is not ticked, readers will not be able to read the document on screen or use other accessibility tools to interact with your document.

Allow low-quality printing

If you clear “Allow printing” but select this checkbox then users will be able to print your document, but not in high-quality.

Encryption

Applies encryption to your PDF output file to ensure only authorized users can view its content. Two different encryption modes are available: 40 bit encryption is back-compatible with Adobe Acrobat versions before 5.0. It is less secure but faster but does not provide as many features as 128 bit encryption. 128 bit encryption is more secure but requires more processing time. It offers extra security features, such as the ability to allow low-quality printing, but only works with Acrobat 5 and above.

Watermarking

Check on the “Watermaking” checkbox and then specify a PDF file as the watermark stamp. If the page size of the watermark PDF file is different from the output, the watermark file will be automatically scaled to fit with the output size.

A watermarking image file in NextPDF is simply a PDF file containing only one page. You can prepare your own watermarks by creating these files and then place them under “gs8.56\bin” in your NextPDF install directory. “Watermaking” and “Background” functions are mutually exclusive.

Background

Check on the “Background” checkbox and then specify a PDF file as the background. If the page size of the background PDF file is different from the output, the background file will be automatically scaled to fit with the output size.

A background image file in NextPDF is simply a PDF file containing only one page. You can prepare your own backgrounds by creating these files and then place them under “gs8.56\bin” in your NextPDF install directory. (“Watermaking” and “Background” functions are mutually exclusive.)

Document Properties Options

Press "Properties" to select different document properties options. “

Title

Specify the Title field in the output PDF file.

Author

Specify the Author field in the output PDF file.

Subject

Specify the Subject field in the output PDF file.

Keywords

Specify the Keywords field in the output PDF file to facilitate searching.

*** End ***